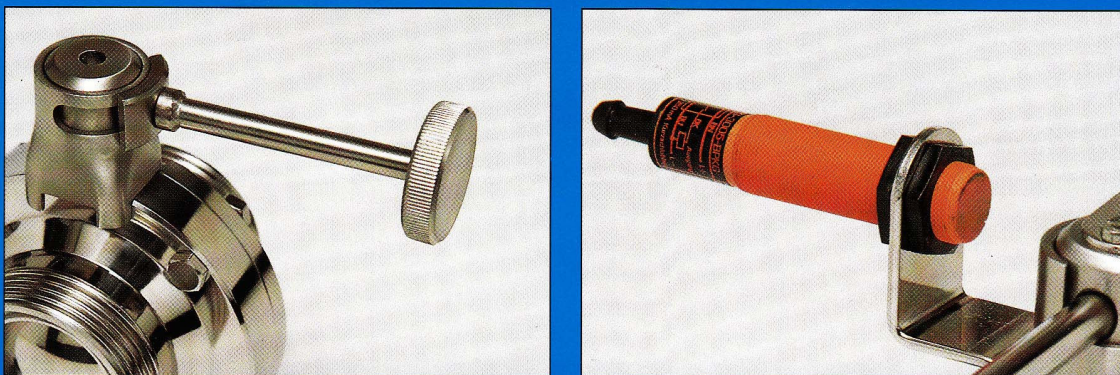
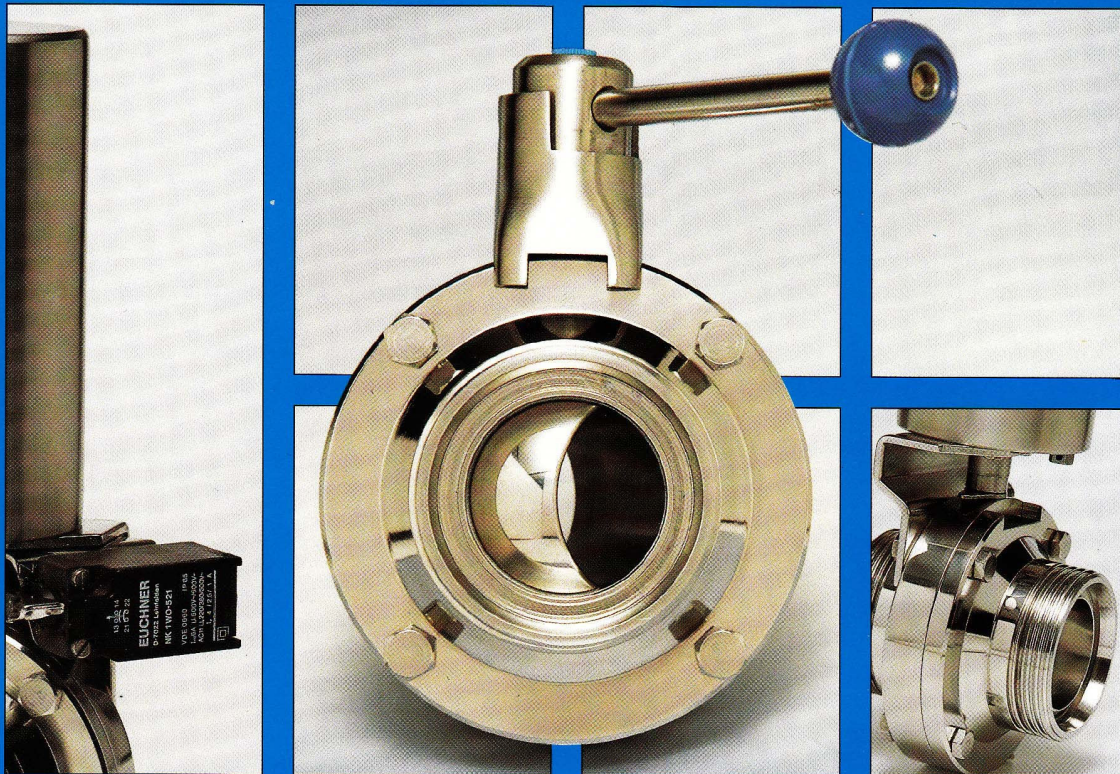


# Ball valves

with specially developed sealing system

## The optimal solution

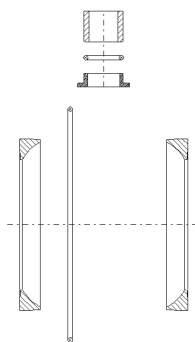
- operating securely
- compact construction
- easy fitting
- smooth flow-through
- favourable for the stream
- maintenance-free
- versatile
- handy operating
- robust and light



### 1.2.3 Kugelventile • Ersatzteile

#### Dichtungsset für Kugelventil DIN/Zoll

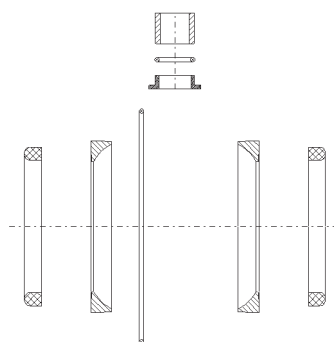
seal kit for ball valve DIN/inch OD



DN	Gewicht [kg]
25	0,024
32	0,042
40	0,053
50	0,057
65	0,103
80	0,132
100	0,174

#### Dichtungsset für Kugelventil Zwischenflansch DIN/Zoll

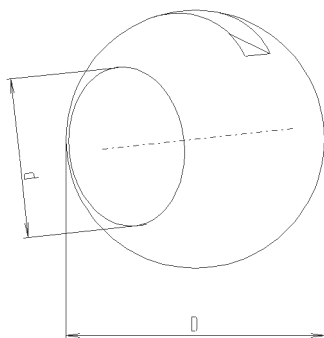
seal kit for ball valve between flanges DIN/inch OD



DN	Gewicht [kg]
25	0,024
32	0,042
40	0,053
50	0,057
65	0,103
80	0,132
100	0,174

#### Kugel für Kugelventil DIN/Zoll

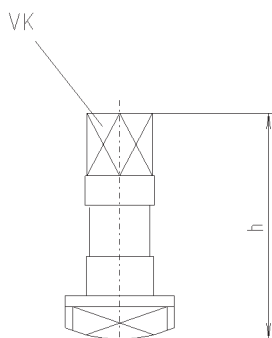
ball for ball valve DIN/inch OD



DN	D	d	Gewicht [kg]
25	45	26	0,178
32	53	32	0,263
40	63	38	0,457
50	80	50	0,892
65	104	66	1,950
75/3"	125	72	4,130
80	125	81	3,270
100	153	100	5,990

#### Welle für Kugelventil DIN/Zoll

shaft for ball valve DIN/inch OD

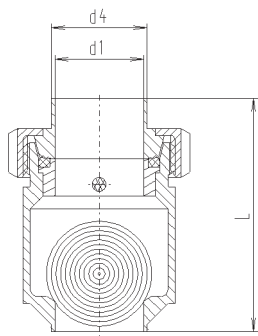


DN	h	VK	Gewicht [kg]
25	41,5	9,5	-
32	39,5	9,5	-
40	41	9,5	-
50	41	9,5	-
65 - 80	37	11,5	-
100	45	14	-

1.9.2 Rückflussverhinderer • Kugelrückflussverhinderer

**Kugelrückschlagventil SS DIN (für Rohr DIN I 1850 Reihe 2)**

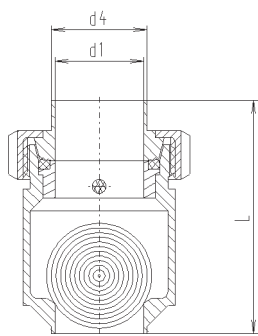
ball type non return valve DIN welding ends



DN	d1	d4	L	Gewicht [kg]
25	26	29	90	-
32	32	35	96	-
40	38	41	100	-
50	50	53	112	-
65	66	70	161	-
80	81	85	201	-

**Kugelrückschlagventil SS Zoll OD**

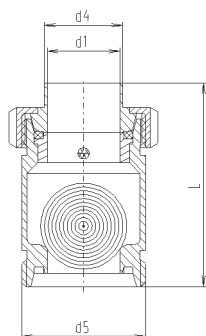
ball type non return valve inch OD welding ends



DN	d1	d4	L	Gewicht [kg]
1"	22,1	25,4	90	-
1¼"	28,5	31,8	96	-
1½"	34,8	38,1	100	-
2"	47,5	50,8	112	-
2½"	60,2	63,5	161	-
3"	72,9	76,1	201	-

**Kugelrückschlagventil GS DIN**

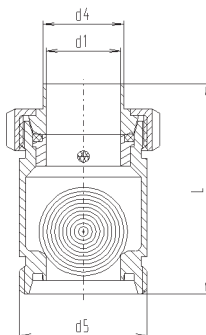
ball type non return valve DIN male/welding end



DN	d1	d4	d5	L	Gewicht [kg]
25	26	31	52x1/6"	97	-
32	32	37	58x1/6"	103	-
40	38	43	65x1/6"	107	-
50	50	55	78x1/6"	119	-
65	66	72	95x1/6"	169	-
80	81	87	110x1/4"	209	-

**Kugelrückschlagventil GS Zoll OD**

ball type non return valve inch OD male/welding end

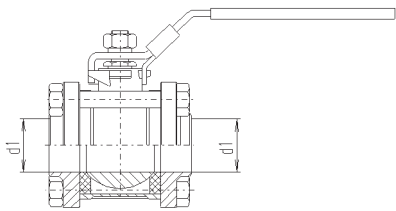


DN	d1	d4	d5	L	Gewicht [kg]
1"	22,1	25,4	52x1/6"	97	-
1¼"	28,5	31,8	58x1/6"	103	-
1½"	34,8	38,1	65x1/6"	107	-
2"	47,5	50,8	78x1/6"	119	-
2½"	60,2	63,5	95x1/6"	169	-
3"	72,9	76,1	104x1/6"	209	-

### I.3 Kugelhähne • Industrieausführung

#### Kugelhahn 3tlg SS PN 64

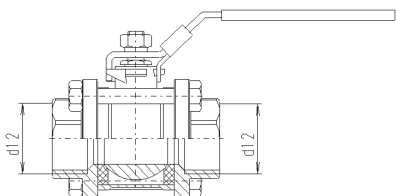
ballvalve 3 piece full bore PN 64 welding ends



DN	d1	Gewicht [kg]
1/4"	11,6	0,350
3/8"	11,6	0,430
1/2"	14,3	0,520
3/4"	20	0,720
1"	25	1,020
1 1/4"	32	1,720
1 1/2"	38	2,420
2"	50	3,600
2 1/2"	65	7,520
3"	80	10,800
4"	100	21,200

#### Kugelhahn 3tlg R-Gewinde i/i PN 64

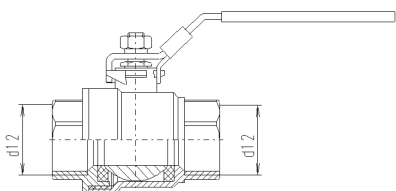
ballvalve 3 piece full bore PN 64 BSP



DN	d12	Gewicht [kg]
1/4"	R 1/4"	0,350
3/8"	R 3/8"	0,430
1/2"	R 1/2"	0,560
3/4"	R 3/4"	0,750
1"	R 1"	1,100
1 1/4"	R 1 1/4"	1,740
1 1/2"	R 1 1/2"	2,410
2"	R 2"	3,660
2 1/2"	R 2 1/2"	7,100
3"	R 3"	10,500
4"	R 4"	21,200

#### Kugelhahn 2tlg R-Gewinde i/i PN 64

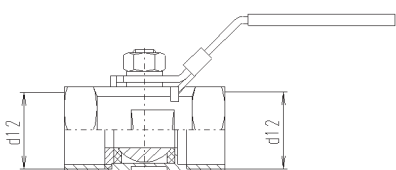
ballvalve 2 piece full bore PN 64 BSP



DN	d12	Gewicht [kg]
1/4"	R 1/4"	0,150
3/8"	R 3/8"	0,170
1/2"	R 1/2"	0,250
3/4"	R 3/4"	0,410
1"	R 1"	0,600
1 1/4"	R 1 1/4"	1,020
1 1/2"	R 1 1/2"	1,400
2"	R 2"	2,500
2 1/2"	R 2 1/2"	4,820
3"	R 3"	7,600

#### Kugelhahn 1tlg R-Gewinde i/i PN 64

ballvalve 1 piece full bore PN 64 BSP



DN	d12	Gewicht [kg]
1/4"	R 1/4"	0,070
3/8"	R 3/8"	0,100
1/2"	R 1/2"	0,160
3/4"	R 3/4"	0,250
1"	R 1"	0,430
1 1/4"	R 1 1/4"	0,700
1 1/2"	R 1 1/2"	0,830
2"	R 2"	1,500